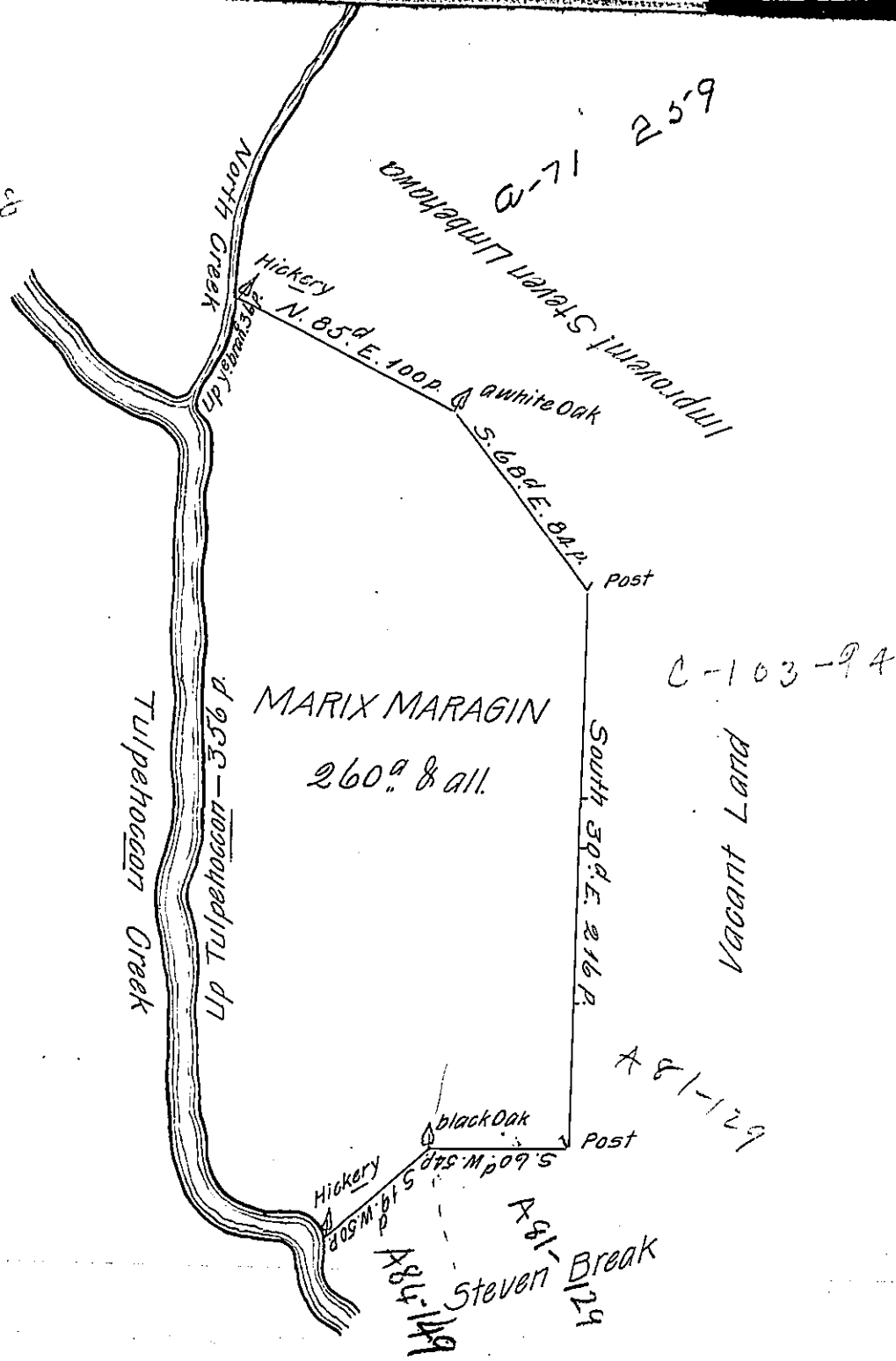


C185-178



By Virtue of a Warrant from the Proprietor Dated the 30<sup>th</sup> of December Anno Dom. 1737. The Above Described Tract of Land was Surveyed Unto Marix Maragin on Tulpehocken Creek in Lancaster County Beginning <sup>at a Hickery</sup> Standing by a branch of Tulpehocken-Called North Creek Thence North 85 Deg. East by Steven Umbehawa 100 P. to a White Oak &c. Containing Two Hundred & Sixty Acres beside the Allowance of Six P. Cent.

24<sup>th</sup> 1<sup>st</sup> Mo. 1737.

P.-

Sam. Lightfoot.

IN TESTIMONY that the above is a copy of the original remaining on file in the Department of Internal Affairs of Pennsylvania, made conformably to an Act of Assembly approved the 16th day of February, 1833, I have hereunto set my Hand and caused the Seal of said Department to be affixed at Harrisburg, this eightth day of June 1905.

*Goode Brown*  
 Secretary of Internal Affairs.